

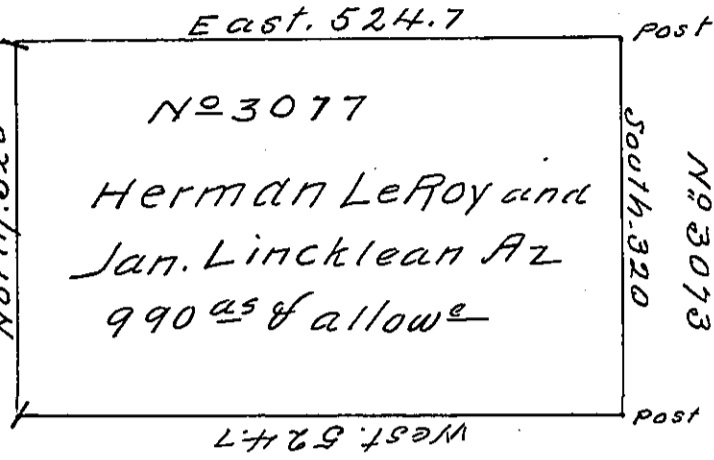
Herman LeRoy &ors

N^o 3084

Herman Le Roy & ors.

N^o 3089

Nor 14.320



N^o 3073

Post

N^o 2671

Wilhelm. Wilink fors

Situate on the south of the main branch of Kinjua Creek near the head in the last purchase Dist N^o 4 surveyed the Eighth day of August 1793 By Warrant to Herman Le Roy & Jan Lincklean Az. Dated the thirteenth day of December 1792 for 900 a.s.

Containing Nine Hundred and Ninety a.s. & the usual allowe. of six pr Ct. for Road. &c.

For Daniel Brodhead Esqr J. G.

pt James Hunter D.S.

IN TESTIMONY that the above is a copy of the original remaining on file in the Department of Internal Affairs of Pennsylvania, made conformably to an Act of Assembly approved the 16th day of February, 1833, I have hereunto set my Hand and caused the Seal of said Department to be affixed at Harrisburg, this Seventh day of September 1905

Laurel Brown
Secretary of Internal Affairs.